




Winnox Burners

Model WX1000

Version 1.00

Main Specifications

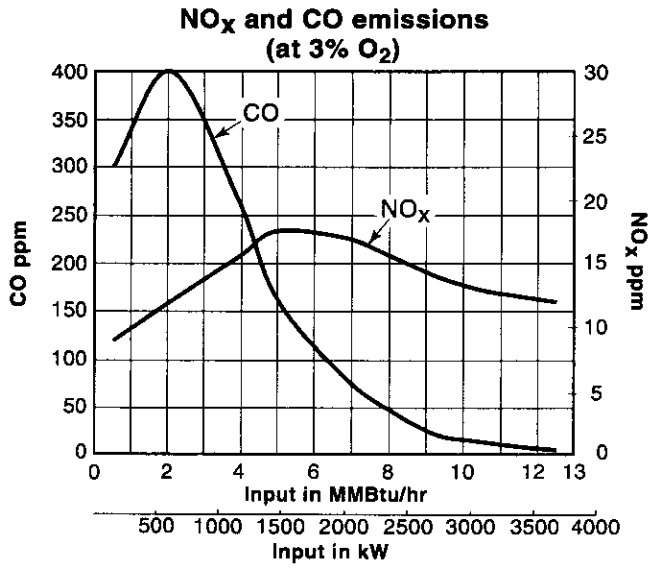
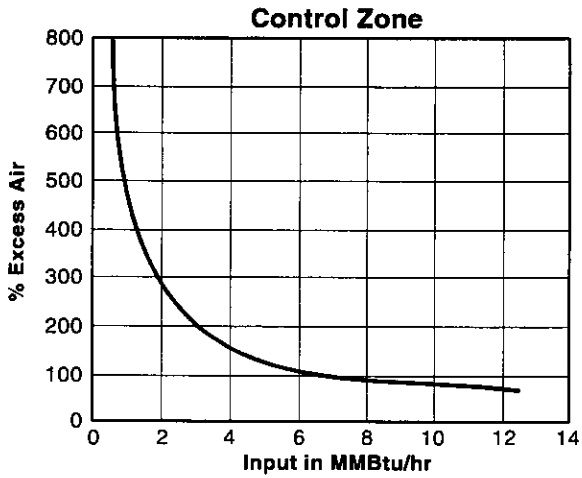
PARAMETER		SPECIFICATIONS	
Blower Type		Packaged blower	Remote blower
Maximum input, MMBTU/hr (kW) Note:  Capacities given without air filter. Contact factory for chamber pressures outside the given range, or varying chamber pressure conditions.	Chamber pressure "WC (mbar)	Nominal (60 Hz)	Pressure at air inlet l psig (70 mbar)
	-5.0 (-12.5)	11.6 (3399)	13.6 (3985)
	-3.0 (-7.5)	11.0 (3223)	13.2 (3868)
	0.0	10.0 (2930)	12.5 (3660)
	1.0 (2.5)	9.65 (2827)	12.2 (3575)
	2.0 (5.0)	9.30 (2725)	12.0 (3516)
Minimum input, BTU/hr (kW)		300,000 (88)	
Fuel inlet pressure at ratio regulator, psi (mbar) ¹⁾	Maximum Minimum	3.0 (140) 1.0 (70)	5.0 (210) 2.0 (140)
Maximum chamber temperature, °F (°C)		Standard combustion tube: 800 (427) High temp. combustion tube: 1600 (875)	
Flame Length		Flame is inside tube at all inputs	
Excess Air, % at high fire		70%	
Piping		N.P.T. burner piping available	
Flame detection		Flame Rod or U.V. Scanner	
Fuels		Natural gas ²⁾	
Weight, lbs (kg)		1150 (522)	850 (386)

1) For proper performance, this pressure must be kept constant across the burner operating range.

2) See Design Guide for more information about typical fuel composition and properties.

- All information is based on laboratory testing. Different chamber size and conditions will affect data.
- Maximum inputs for packaged blower versions are given for the standard combustion air blower without an inlet air filter.
- All inputs are based on gross calorific values and standard conditions: one atmosphere, 70° F (21° C)
- Eclipse reserves the right to change the construction and/or configuration of our products at any time without being obliged to adjust earlier supplies accordingly.

Performance Graphs Winnox WX1000



Input at low fire changes with ratio regulator adjustment.

Secondary by-pass fuel setting:

FUEL	ΔP "w.c. (mbar)*
Nat. Gas	2.0 (5.0)

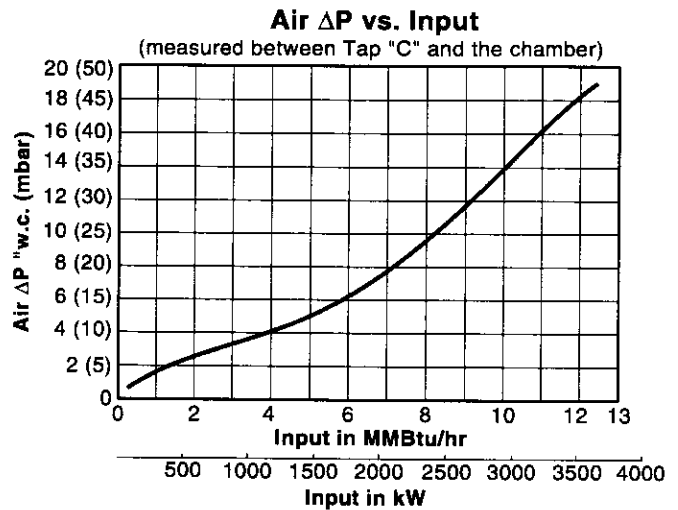
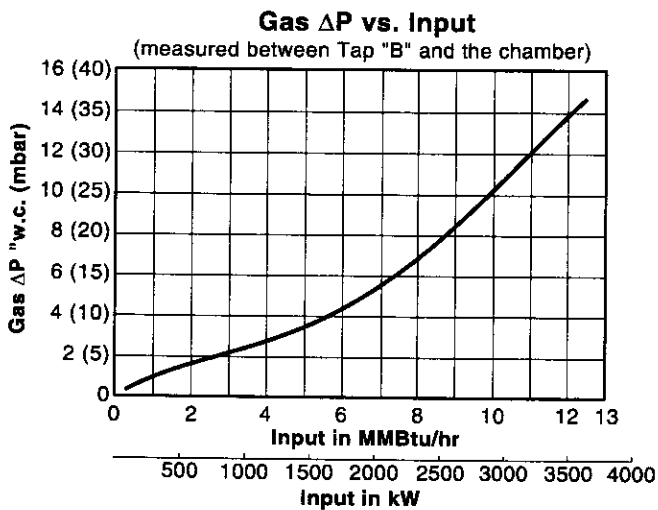
* Measured between Tap "E" and the chamber @ low fire.

- NO_x and CO emission data is given for:
- Ambient combustion air (~70 °F, 20 °C)
 - Less than 1000 °F (540 °C) firing chamber
 - Minimal process air velocity
 - Low fire input adjusted to 300,000 BTU/hr (88 kW)
 - Neutral chamber pressure

Emissions are influenced by:

- Chamber conditions
- Fuel type
- Firing rate
- Ratio regulator adjustments
- Combustion air temperature

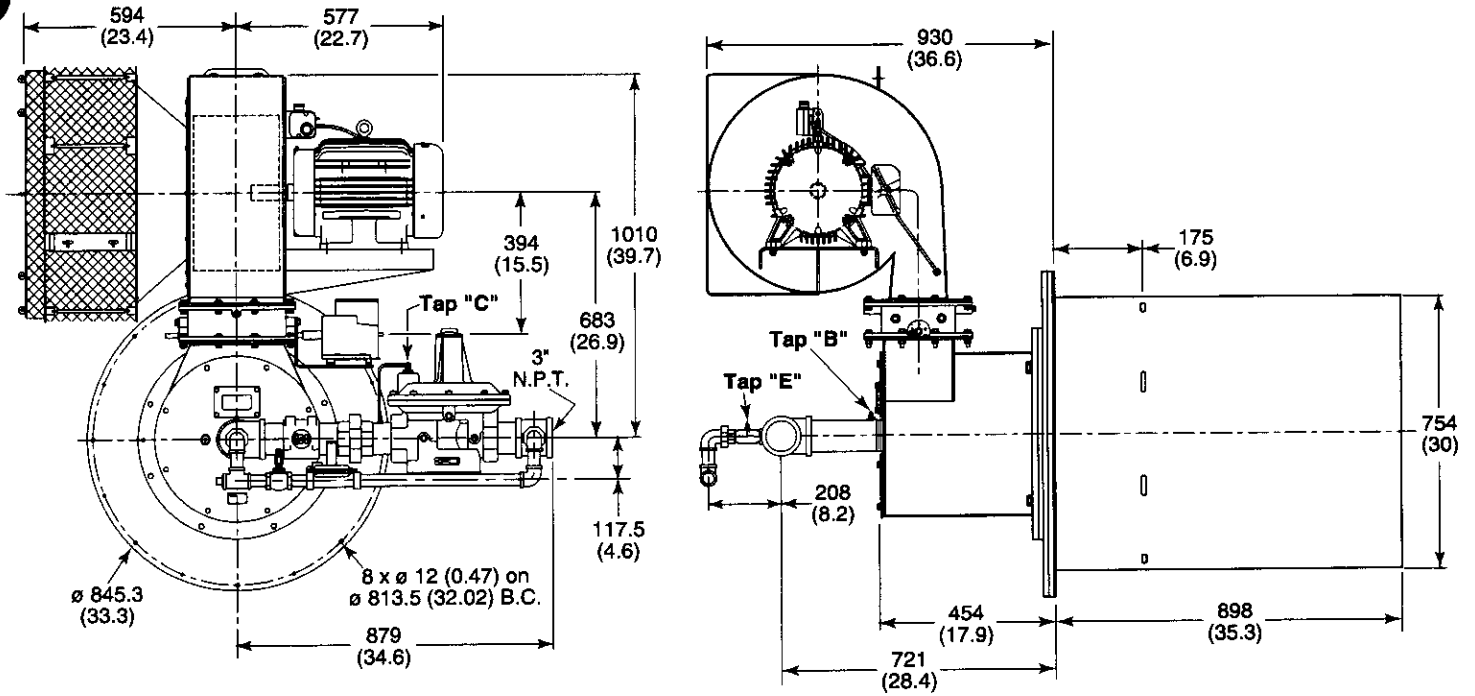
CO emission is largely influenced by chamber conditions. Contact your local Eclipse Combustion representative for an estimate of CO emission on your application.



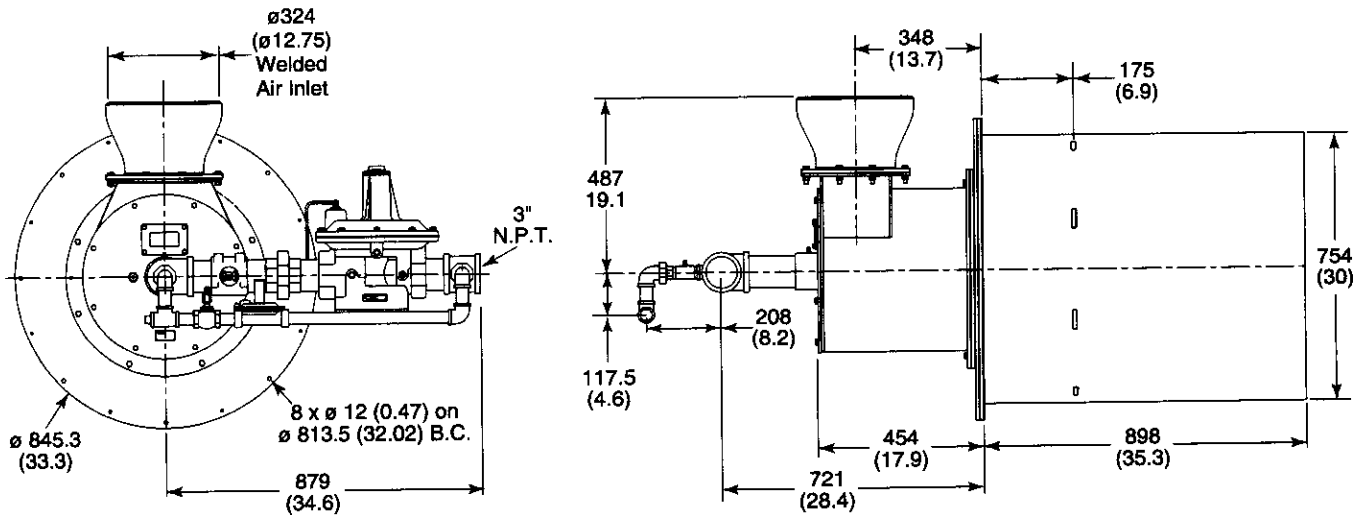
Dimensions
WX1000 v 1.00

Dimensions in mm (in)

Packaged Blower



Remote Blower



Winnox Spare Parts

Item, Description	Part Number
Combustion Tube Less Insulation* (<1000° F)	
100	100187
200	100330
300 & 400	101028
500 & 600	101027
1000	110623
Combustion Tube Less Insulation* (<1600° F)	
100	100186
200	100329
300 & 400	101309
500 & 600	101310
1000	110627
Block & Holder	
300 & 400	101173
500 & 600	101172
Restrictor	
100	100188
200	100246
300	101029
400	101026
500	101030
600	101025
1000	110625
Nozzle	
100 - Natural Gas	100176
200 - Natural Gas	100243
300 - Natural Gas	101046
300 - Propane/Butane	101047
400 - Natural Gas	101044
400 - Propane/Butane	101045
500 - Natural Gas	101042
500 - Propane/Butane	101043
600 - Natural Gas	101040
600 - Propane/Butane	101041
1000 - Natural	101176
Gas orifices	
All	14188-22
Spark rod	
100	100173-1
200	100205-1
300 & 400	100205-2
500 & 600	100205-3
1000	100205-12
Flame rod	
100	100050-7
200	100050-9
300 & 400	100050-5
500 & 600	100050-4
1000	100050-8
Mounting gasket (alloy tube)	
100	21903
200	22043
300 & 400	20592
500 & 600	20593
1000 (Qty. 2 Req'd)	25088
Mounting gasket (block & holder)	
300 & 400	21503
500 & 600	21502

Item, Description	Part Number
Blower motor	
100 1.5 hp 208-230/460/3/60 TEFC	20547
1.5 hp 460/3/60 Auto, TEFC, NEMA	20371
200 3 hp 208-230/460/3/60 TEFC	16770
3 hp 460/3/60 Auto, TEFC, NEMA	20360
300 5 hp 208-230/460/3/60 TEFC	17230
5 hp 460/3/60 Auto, TEFC, NEMA	20531
4 kW 220-240/380-415/3/60 IEC	20526
400 5 hp 208-230/460/3/60 TEFC	17230
5 hp 460/3/60 Auto, TEFC, NEMA	20531
4 kW 220-240/380-415/3/60 IEC	20526
500 7.5 hp 208-230/460/3/60 TEFC	20546
7.5 hp 460/3/60 Auto, TEFC, NEMA	21457
5.5 kW 220-240/380-415/3/60 IEC	21064
600 7.5 hp 208-230/460/3/60 TEFC	20546
7.5 hp 460/3/60 Auto, TEFC, NEMA	21457
5.5 kW 220-240/380-415/3/60 IEC	21064
1000 15 hp 230/460/3/60 TEFC	11220
Blower air inlet filter element (foam)	
100	11132
200	11128
300 thru 600	15608
1000	15608
Blower air inlet filter/silencer element	
100	20508
200, 300 & 400 (need qty. 2)	20508
500 & 600	20509



**Note: When ordering replacement Combustion Tubes, two Tube Insulators are required (Models 100-600) One Tube Insulator required (Model 1000).*

TUBE INSULATOR

Item, Description	Part Number
100	22439
200	22440
300 & 400	22441
500 & 600	22442
1000	25095

ECLIPSE
Innovative Thermal Solutions

Eclipse Combustion

www.eclipsenet.com

ISO 9001 Registered



Eclipse Combustion

Offered By:

Power Equipment Company
2011 Williamsburg Road
Richmond, VA 23231
Phone: 804-236-3800 Fax: 804-236-3882

www.peconet.com